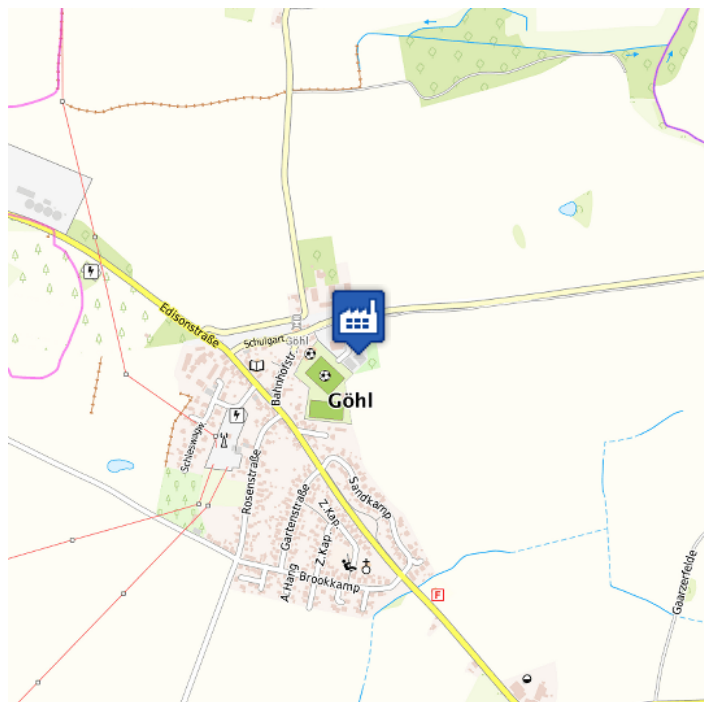


# Lagerhalle mit Bürokomplex in Göhl, Kreis Ostholstein

Object type

Industry with office

## Geographical location of real estate



Lage des Objektes

|                    |                              |
|--------------------|------------------------------|
| Municipality       | Göhl                         |
| Address            | Neukoppel                    |
| Zip code           | 23758                        |
| Location publicity | ZIP code, address, and point |
| Location           | Commercial area              |

## General characteristics

|                                   |      |
|-----------------------------------|------|
| Year of construction              | 2001 |
| Net floor space (m <sup>2</sup> ) | 900  |
| Office area (m <sup>2</sup> )     | 250  |
| Industry area (m <sup>2</sup> )   | 650  |
| Number of floors                  | 2    |

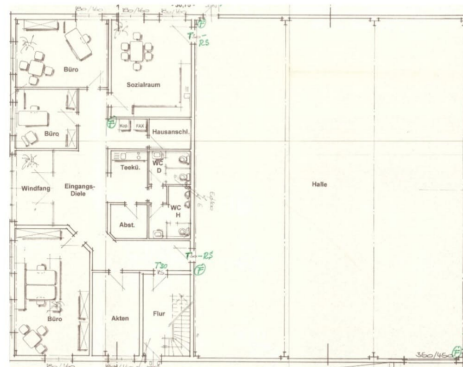
Rent deposit (text)  
All Prices in Euro.

Drei Nettokaltmieten

## Photographs







Grundriss EG



Grundriss Wohnung OG

## Contact

Contact person

Sebastian Boye  
ENZIO Grundbestiz GmbH  
Hackendohrredder 8  
23684 Scharbeutz  
[boye@enzio-immobilien.de](mailto:boye@enzio-immobilien.de)